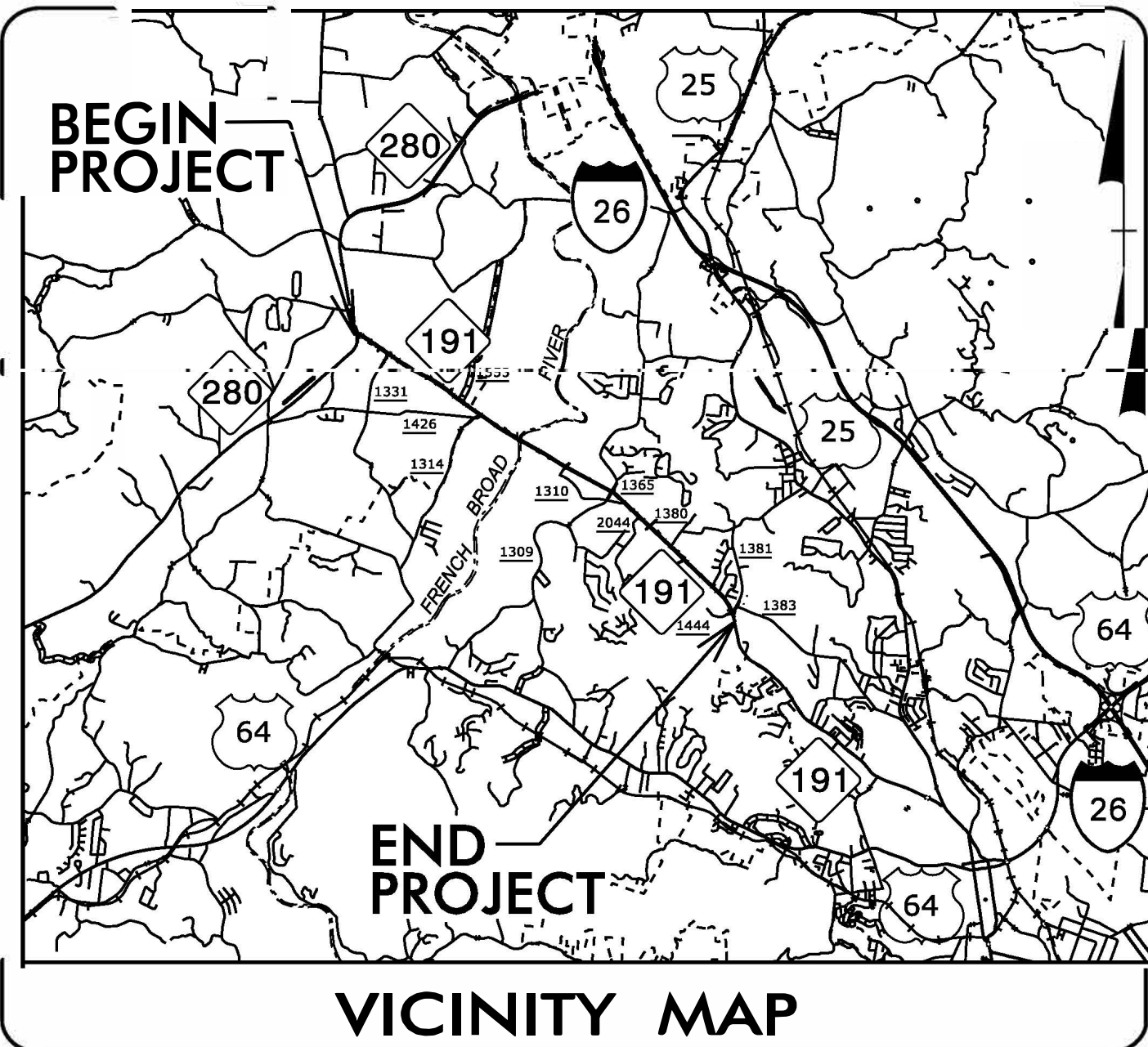
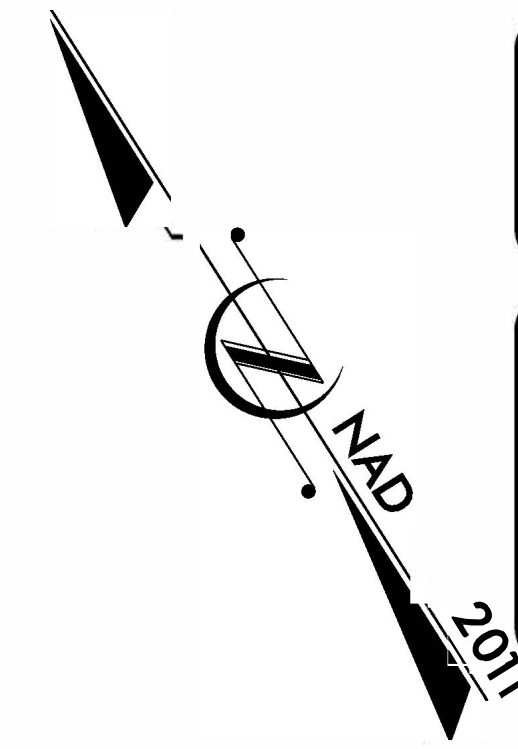


STATE OF NORTH CAROLINA
DIVISION OF HIGHWAYS

**TREE CLEARING NEEDS
OH UTILITY RELOCATION
HENDERSON COUNTY**

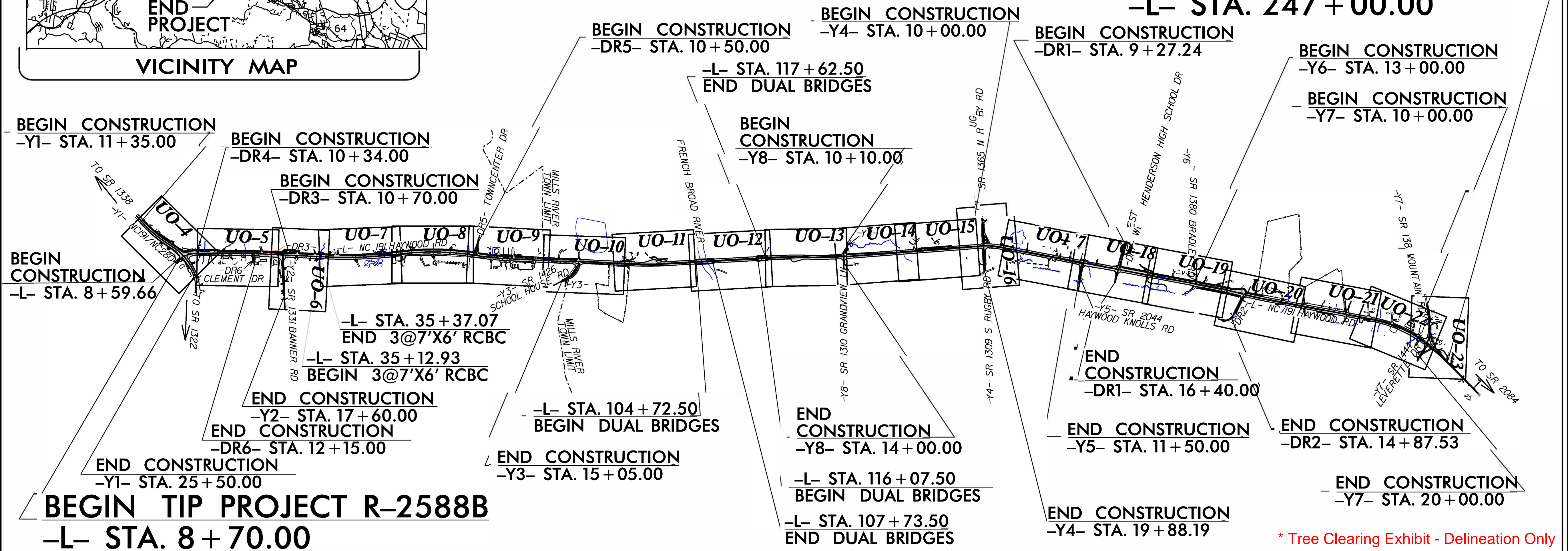
T.I.P. NO.	SHEET NO.
R-2588BA	UO-1

NOTE:
PLANS TO BE USED FOR TREE CLEARING
PURPOSES ONLY.



LOCATION: WIDEN NC 191 FROM NC 280 TO SR 1381 (MOUNTAIN RD)
TYPE OF WORK: TREE CLEARING NEEDS FOR
UTILITY CORRIDOR.

END TIP PROJECT R-2588B
-L- STA. 247 + 00.00



BEGIN CONSTRUCTION
-Y1- STA. 11+35.00

BEGIN CONSTRUCTION
-DR4- STA. 10+34.00

BEGIN CONSTRUCTION
-DR3- STA. 10+70.00

BEGIN CONSTRUCTION
-L- STA. 8+59.66

-L- STA. 35+37.07
END 3@7'X6' RCBC
-L- STA. 35+12.93
BEGIN 3@7'X6' RCBC

END CONSTRUCTION
-Y2- STA. 17+60.00
END CONSTRUCTION
-DR6- STA. 12+15.00

END CONSTRUCTION
-Y1- STA. 25+50.00

BEGIN TIP PROJECT R-2588B
-L- STA. 8 + 70.00

-L- STA. 104+72.50
BEGIN DUAL BRIDGES

END CONSTRUCTION
-Y3- STA. 15+05.00

END CONSTRUCTION
-Y8- STA. 14+00.00

-L- STA. 116+07.50
BEGIN DUAL BRIDGES
-L- STA. 107+73.50
END DUAL BRIDGES

END CONSTRUCTION
-DR1- STA. 16+40.00

END CONSTRUCTION
-Y4- STA. 19+88.19

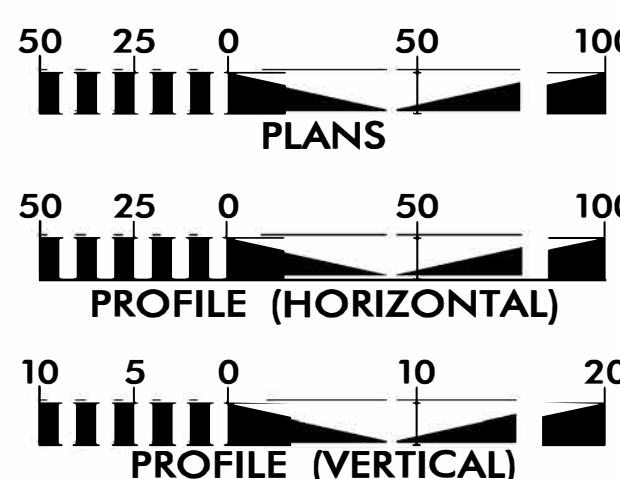
END CONSTRUCTION
-DR2- STA. 14+87.53

END CONSTRUCTION
-Y7- STA. 20+00.00

* Tree Clearing Exhibit - Delineation Only

PRELIMINARY PLANS
DO NOT USE FOR CONSTRUCTION

GRAPHIC SCALES



INDEX OF SHEETS

SHEET NO.:	DESCRIPTION:
UO-1	TITLE SHEET
UO-2 THRU UO-3	DETAIL SHEETS
UO-4 THRU UO-23	UBO PLAN SHEETS

UTILITY OWNERS WITH CONFLICTS

- (A) POWER DISTRIBUTION - DUKE ENERGY
- (B) POWER TRANSMISSION - DUKE ENERGY
- (C) COMMUNICATIONS - AT&T
- (D) COMMUNICATIONS - AT&T LONG DISTANCE
- (E) COMMUNICATIONS - ERC
- (F) COMMUNICATIONS/CATV - OPTIMUM
- (G) GAS - DOMINION

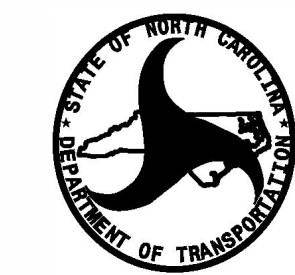
LETTING DATE:
JANUARY 28, 2025

PREPARED IN THE OFFICE OF:



TELICS
1598 WESTBROOK PLAZA DR.
SUITE 202
WINSTON-SALEM, NC 27103
(336) 705-8844

CORY WOOD UTILITY PROJECT MANAGER
CORY WOOD PROJECT UTILITY COORDINATOR



DIVISION OF HIGHWAYS
UTILITIES UNIT
1555 MAIL SERVICES CENTER
RALEIGH NC 27699-1555
PHONE (919) 707-6690
FAX (919) 250-4151

LUIS HEMMER PROJECT MANAGER
BOB GOLDING UTILITY ENGINEER

TIP PROJECT: R-2588BA

WBS # :34473.3.6

5 DEC 2023 2:01 PM C:\UBO\Projects\Engineering\UBO\Proj\290_001_R2588B\ut_tsh_UO01.psh.dgn

STATE OF NORTH CAROLINA, DIVISION OF HIGHWAYS CONVENTIONAL PLAN SHEET SYMBOLS

BOUNDARIES AND PROPERTY:

State Line	-----
County Line	-----
Township Line	-----
City Line	-----
Reservation Line	-----
Property Line	-----
Existing Iron Pin	○
Computed Property Corner	⊗
Property Monument	□
Parcel/Sequence Number	⑫③
Existing Fence Line	—x—x—x—
Proposed Woven Wire Fence	○
Proposed Chain Link Fence	□
Proposed Barbed Wire Fence	◇
Existing Wetland Boundary	-----
Proposed Wetland Boundary	-----
Existing Endangered Animal Boundary	-----
Existing Endangered Plant Boundary	-----
Existing Historic Property Boundary	-----
Known Contamination Area: Soil	☠—s—☠
Potential Contamination Area: Soil	??—s—??
Known Contamination Area: Water	☠—w—☠
Potential Contamination Area: Water	??—w—??
Contaminated Site: Known or Potential	☠??

BUILDINGS AND OTHER CULTURE:

Gas Pump Vent or U/G Tank Cap	○
Sign	○
Well	○
Small Mine	⊗
Foundation	□
Area Outline	□
Cemetery	□
Building	□
School	□
Church	□
Dam	—

HYDROLOGY:

Stream or Body of Water	-----
Hydro, Pool or Reservoir	-----
Jurisdictional Stream	-----
Buffer Zone 1	-----
Buffer Zone 2	-----
Flow Arrow	←
Disappearing Stream	-----
Spring	○
Wetland	-----
Proposed Lateral, Tail, Head Ditch	-----
False Sump	-----

RAILROADS:

Standard Gauge	-----
RR Signal Milepost	○
Switch	□
RR Abandoned	-----
RR Dismantled	-----

RIGHT OF WAY & PROJECT CONTROL:

Secondary Horiz and Vert Control Point	◆
Primary Horiz Control Point	○
Primary Horiz and Vert Control Point	●
Exist Permanent Easment Pin and Cap	◇
New Permanent Easment Pin and Cap	◆
Vertical Benchmark	⊗
Existing Right of Way Marker	△
Existing Right of Way Line	-----
New Right of Way Line	-----
New Right of Way Line with Pin and Cap	-----
New Right of Way Line with Concrete or Granite R/W Marker	-----
New Control of Access Line with Concrete CA Marker	-----
Existing Control of Access	-----
New Control of Access	-----
Existing Easement Line	-----
New Temporary Construction Easement	-----
New Temporary Drainage Easement	-----
New Permanent Drainage Easement	-----
New Permanent Drainage / Utility Easement	-----
New Permanent Utility Easement	-----
New Temporary Utility Easement	-----
New Aerial Utility Easement	-----

ROADS AND RELATED FEATURES:

Existing Edge of Pavement	-----
Existing Curb	-----
Proposed Slope Stakes Cut	-----
Proposed Slope Stakes Fill	-----
Proposed Curb Ramp	-----
Existing Metal Guardrail	-----
Proposed Guardrail	-----
Existing Cable Guiderail	-----
Proposed Cable Guiderail	-----
Equality Symbol	⊗
Pavement Removal	-----

VEGETATION:

Single Tree	○
Single Shrub	○

Note: Not to Scale

*S.U.E. = Subsurface Utility Engineering

Hedge	-----
Woods Line	-----
Orchard	-----
Vineyard	-----

EXISTING STRUCTURES:

MAJOR:	
Bridge, Tunnel or Box Culvert	-----
Bridge Wing Wall, Head Wall and End Wall	-----
MINOR:	
Head and End Wall	-----
Pipe Culvert	-----
Footbridge	-----
Drainage Box: Catch Basin, DI or JB	-----
Paved Ditch Gutter	-----
Storm Sewer Manhole	-----
Storm Sewer	-----

UTILITIES:

POWER:	
Existing Power Pole	●
Proposed Power Pole	○
Existing Joint Use Pole	●
Proposed Joint Use Pole	○
Power Manhole	⊗
Power Line Tower	⊗
Power Transformer	⊗
U/G Power Cable Hand Hole	-----
H-Frame Pole	●
U/G Power Line LOS B (S.U.E.*)	-----
U/G Power Line LOS C (S.U.E.*)	-----
U/G Power Line LOS D (S.U.E.*)	-----

TELEPHONE:

Existing Telephone Pole	●
Proposed Telephone Pole	○
Telephone Manhole	⊗
Telephone Pedestal	⊗
Telephone Cell Tower	⊗
U/G Telephone Cable Hand Hole	-----
U/G Telephone Cable LOS B (S.U.E.*)	-----
U/G Telephone Cable LOS C (S.U.E.*)	-----
U/G Telephone Cable LOS D (S.U.E.*)	-----
U/G Telephone Conduit LOS B (S.U.E.*)	-----
U/G Telephone Conduit LOS C (S.U.E.*)	-----
U/G Telephone Conduit LOS D (S.U.E.*)	-----
U/G Fiber Optics Cable LOS B (S.U.E.*)	-----
U/G Fiber Optics Cable LOS C (S.U.E.*)	-----
U/G Fiber Optics Cable LOS D (S.U.E.*)	-----

WATER:

Water Manhole	⊗
Water Meter	○
Water Valve	⊗
Water Hydrant	⊗
U/G Water Line LOS B (S.U.E.*)	-----
U/G Water Line LOS C (S.U.E.*)	-----
U/G Water Line LOS D (S.U.E.*)	-----
Above Ground Water Line	-----

TV:

TV Pedestal	⊗
TV Tower	⊗
U/G TV Cable Hand Hole	-----
U/G TV Cable LOS B (S.U.E.*)	-----
U/G TV Cable LOS C (S.U.E.*)	-----
U/G TV Cable LOS D (S.U.E.*)	-----
U/G Fiber Optic Cable LOS B (S.U.E.*)	-----
U/G Fiber Optic Cable LOS C (S.U.E.*)	-----
U/G Fiber Optic Cable LOS D (S.U.E.*)	-----

GAS:

Gas Valve	◇
Gas Meter	⊗
U/G Gas Line LOS B (S.U.E.*)	-----
U/G Gas Line LOS C (S.U.E.*)	-----
U/G Gas Line LOS D (S.U.E.*)	-----
Above Ground Gas Line	-----

SANITARY SEWER:

Sanitary Sewer Manhole	⊗
Sanitary Sewer Cleanout	⊗
U/G Sanitary Sewer Line	-----
Above Ground Sanitary Sewer	-----
SS Forced Main Line LOS B (S.U.E.*)	-----
SS Forced Main Line LOS C (S.U.E.*)	-----
SS Forced Main Line LOS D (S.U.E.*)	-----

MISCELLANEOUS:

Utility Pole	●
Utility Pole with Base	□
Utility Located Object	○
Utility Traffic Signal Box	⊗
Utility Unknown U/G Line LOS B (S.U.E.*)	-----
U/G Tank; Water, Gas, Oil	-----
Underground Storage Tank, Approx. Loc.	-----
A/G Tank; Water, Gas, Oil	-----
Geoenvironmental Boring	⊗
U/G Test Hole LOS A (S.U.E.*)	-----
Abandoned According to Utility Records	AATUR
End of Information	E.O.I.

12/2/2016

PROJECT REFERENCE NO.	SHEET NO.
R-2588B	U0-3

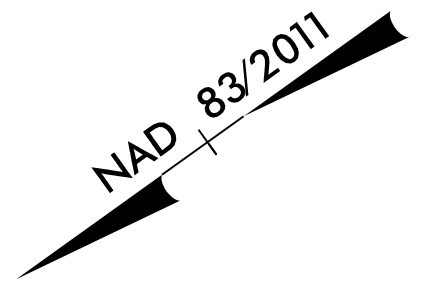
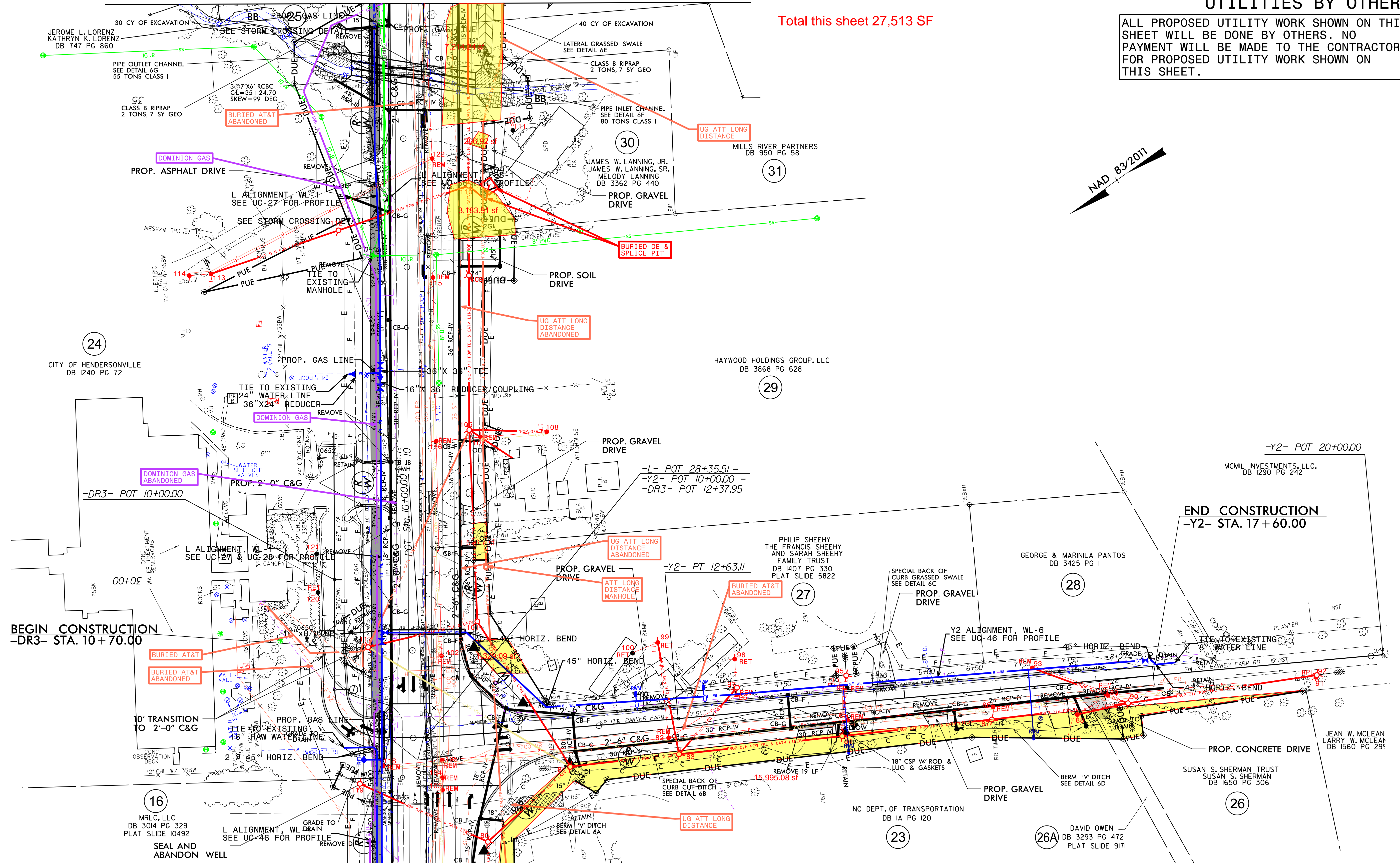
DETAILS

MATCH LINE STA. -L- 36+00.00 MATCH TO SHEET UO-5

UTILITIES BY OTHERS

ALL PROPOSED UTILITY WORK SHOWN ON THIS SHEET WILL BE DONE BY OTHERS. NO PAYMENT WILL BE MADE TO THE CONTRACTOR FOR PROPOSED UTILITY WORK SHOWN ON THIS SHEET.

Total this sheet 27,513 SF



MATCH LINE STA. -L- 27+00.00 MATCH TO SHEET UO-3

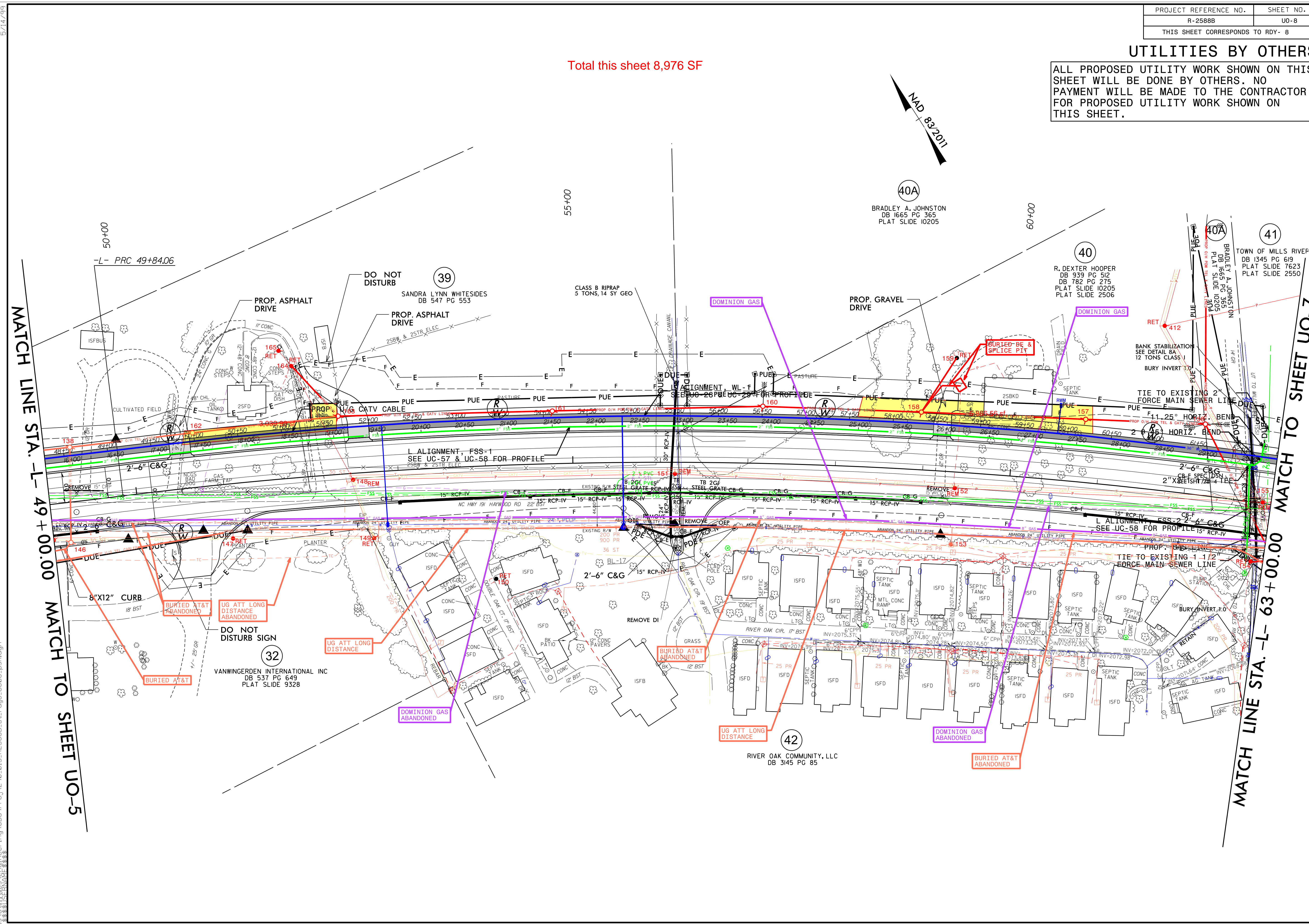
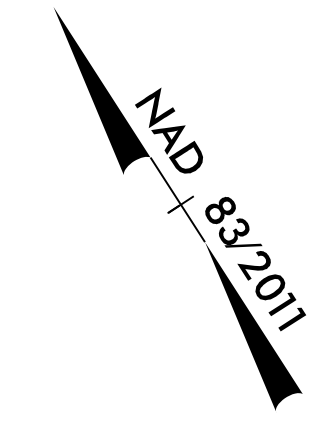
5/14/19
 15-DEC-2023 20:42
 C:\Users\N\Documents\Engineering\UBO\Proj\290_011_R2588B.ut.rd\6_UO06.psh.dgn
 \$\$\$\$\$\$

PROJECT REFERENCE NO.	SHEET NO.
R-2588B	UO-8
THIS SHEET CORRESPONDS TO RDY- 8	

UTILITIES BY OTHERS

ALL PROPOSED UTILITY WORK SHOWN ON THIS SHEET WILL BE DONE BY OTHERS. NO PAYMENT WILL BE MADE TO THE CONTRACTOR FOR PROPOSED UTILITY WORK SHOWN ON THIS SHEET.

Total this sheet 8,976 SF



5/14/1999

15-DEC-2023 20:55

3 \UB03 \engineer\ng\UB03\Pr-j\290_015_R2588B_ut_rdy8_UO08_psh.dgn

MATCH LINE STA. -L- 49+00.00 MATCH TO SHEET UO-5

MATCH TO SHEET UO-7

DO NOT DISTURB

SANDRA LYNN WHITESIDES
DB 547 PG 553

CLASS B RIPRAP
5 TONS, 14 SY GEO

DOMINION GAS

PROP. ASPHALT DRIVE

PROP. ASPHALT DRIVE

PROP. GRAVEL DRIVE

DOMINION GAS

BURIED-BE & SPLICE PIT

RET 412

BANK STABILIZATION
SEE DETAIL BA
12 TONS CLASS 1
BURY INVERT 1.0

TIE TO EXISTING 2"
FORCE MAIN SEWER LINE

F1.1 25° HORIZ. BEND

2" X 8" SPEC. 15' 4" TIE

L ALIGNMENT, FSS-1
SEE UC-57 & UC-58 FOR PROFILE

2'-6" C&G

15" RCP-IV

REMOVE OEP

REMOVE DI

BURIED AT&T ABANDONED

UG ATT LONG DISTANCE ABANDONED

DO NOT DISTURB SIGN

VANWINGERDEN INTERNATIONAL INC
DB 537 PG 649
PLAT SLIDE 9328

DOMINION GAS ABANDONED

2'-6" C&G

15" RCP-IV

REMOVE DI

BURIED AT&T ABANDONED

UG ATT LONG DISTANCE

DOMINION GAS ABANDONED

BURIED AT&T ABANDONED

RIVER OAK COMMUNITY, LLC
DB 3145 PG 85

40A
BRADLEY A. JOHNSTON
DB 1665 PG 365
PLAT SLIDE 10205

40
R. DEXTER HOOPER
DB 939 PG 512
DB 782 PG 275
PLAT SLIDE 10205
PLAT SLIDE 2506

41
TOWN OF MILLS RIVER
DB 1345 PG 619
PLAT SLIDE 7623
PLAT SLIDE 2550

42

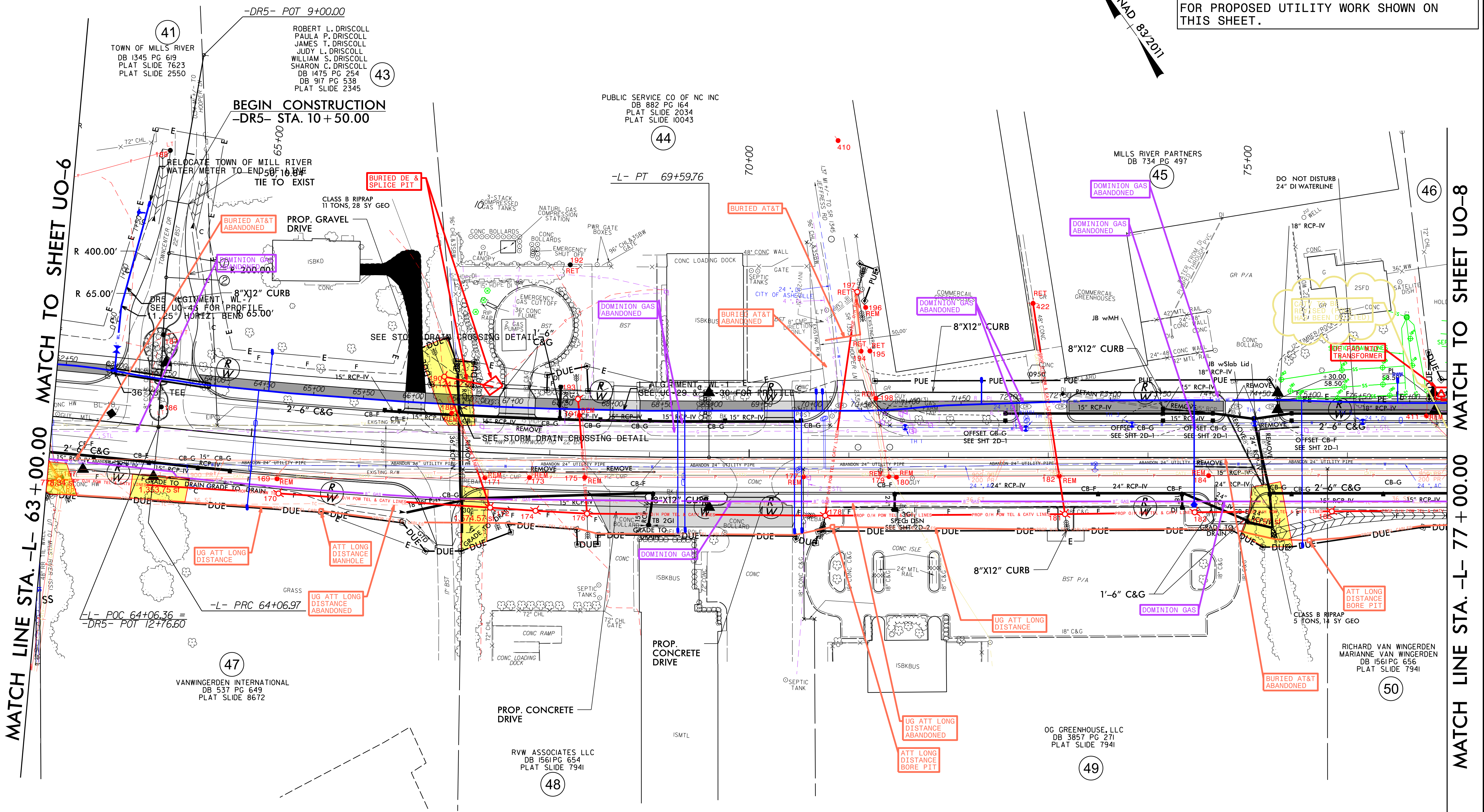
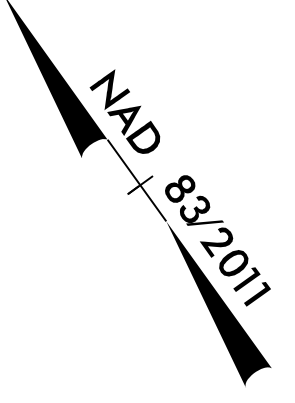
5/14/2023 2:13
C:\Users\j... \Public\Projects\2023\017_R2588B\ut_rdy_9_u009_psh.dgn

Total this sheet 9,212 SF

PROJECT REFERENCE NO.	SHEET NO.
R-2588B	U0-9
THIS SHEET CORRESPONDS TO RDY-9	

UTILITIES BY OTHERS

ALL PROPOSED UTILITY WORK SHOWN ON THIS SHEET WILL BE DONE BY OTHERS. NO PAYMENT WILL BE MADE TO THE CONTRACTOR FOR PROPOSED UTILITY WORK SHOWN ON THIS SHEET.



MATCH LINE STA. -L- 63+00.00 MATCH TO SHEET UO-6

MATCH LINE STA. -L- 77+00.00 MATCH TO SHEET UO-8

41 TOWN OF MILLS RIVER
DB 1345 PG 619
PLAT SLIDE 7623
PLAT SLIDE 2550

BEGIN CONSTRUCTION
-DR5- STA. 10+50.00

PUBLIC SERVICE CO OF NC INC
DB 882 PG 164
PLAT SLIDE 2034
PLAT SLIDE 10043

MILLS RIVER PARTNERS
DB 734 PG 497

47 VANWINGERDEN INTERNATIONAL
DB 537 PG 649
PLAT SLIDE 8672

48 RVW ASSOCIATES LLC
DB 1561 PG 654
PLAT SLIDE 7941

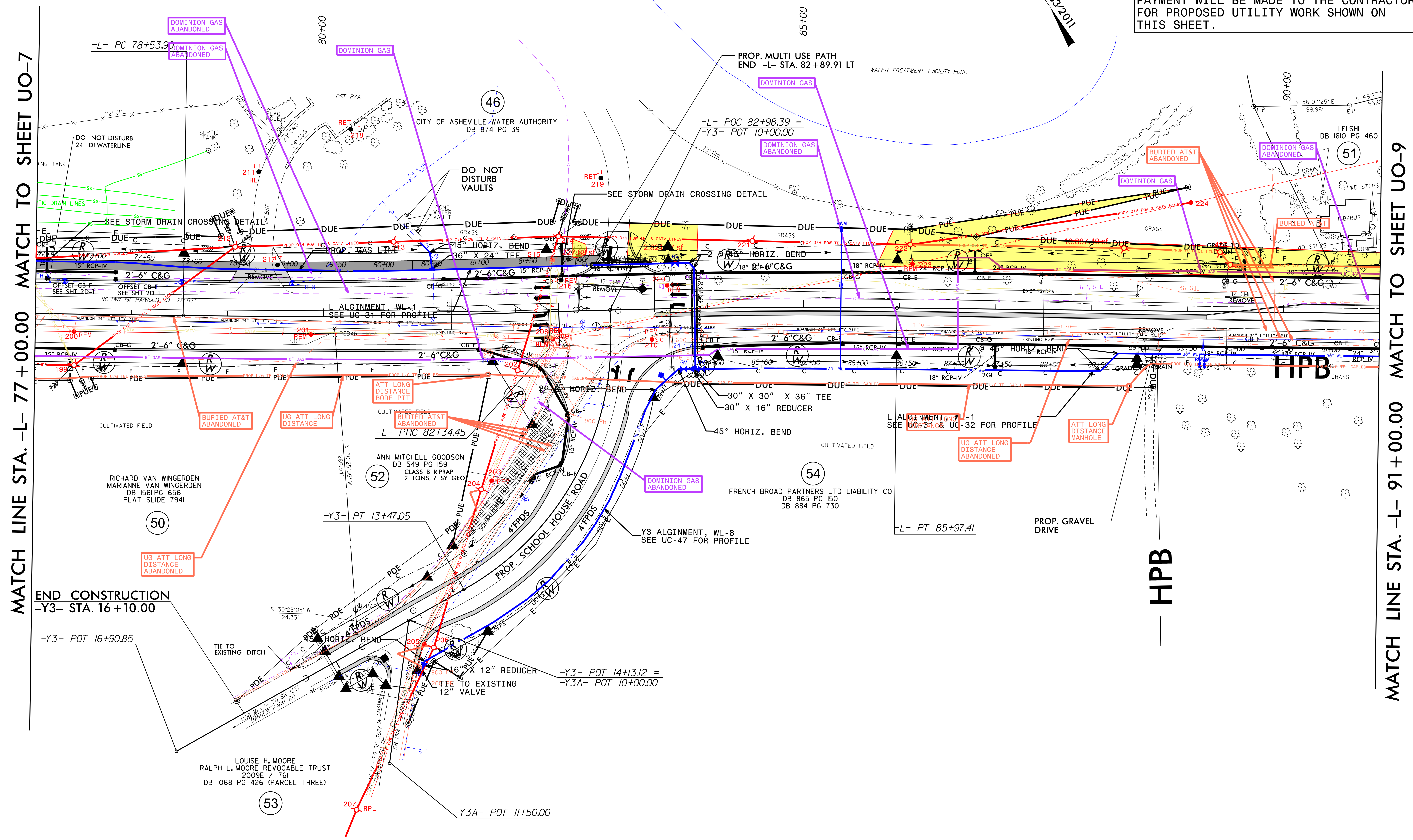
49 OG GREENHOUSE, LLC
DB 3857 PG 271
PLAT SLIDE 7941

50 RICHARD VAN WINGERDEN
MARIANNE VAN WINGERDEN
DB 1561 PG 656
PLAT SLIDE 7941

Total this sheet
21,395

UTILITIES BY OTHERS

ALL PROPOSED UTILITY WORK SHOWN ON THIS SHEET WILL BE DONE BY OTHERS. NO PAYMENT WILL BE MADE TO THE CONTRACTOR FOR PROPOSED UTILITY WORK SHOWN ON THIS SHEET.

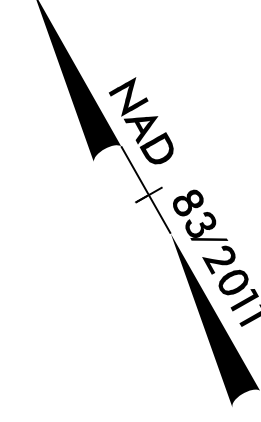


5/14/2007 08:48 3\UB00\Engineering\UB00\Proj\2007_019_R2588B.ut_r.dwg U010.psh.dgn

Total this sheet 1720 SF

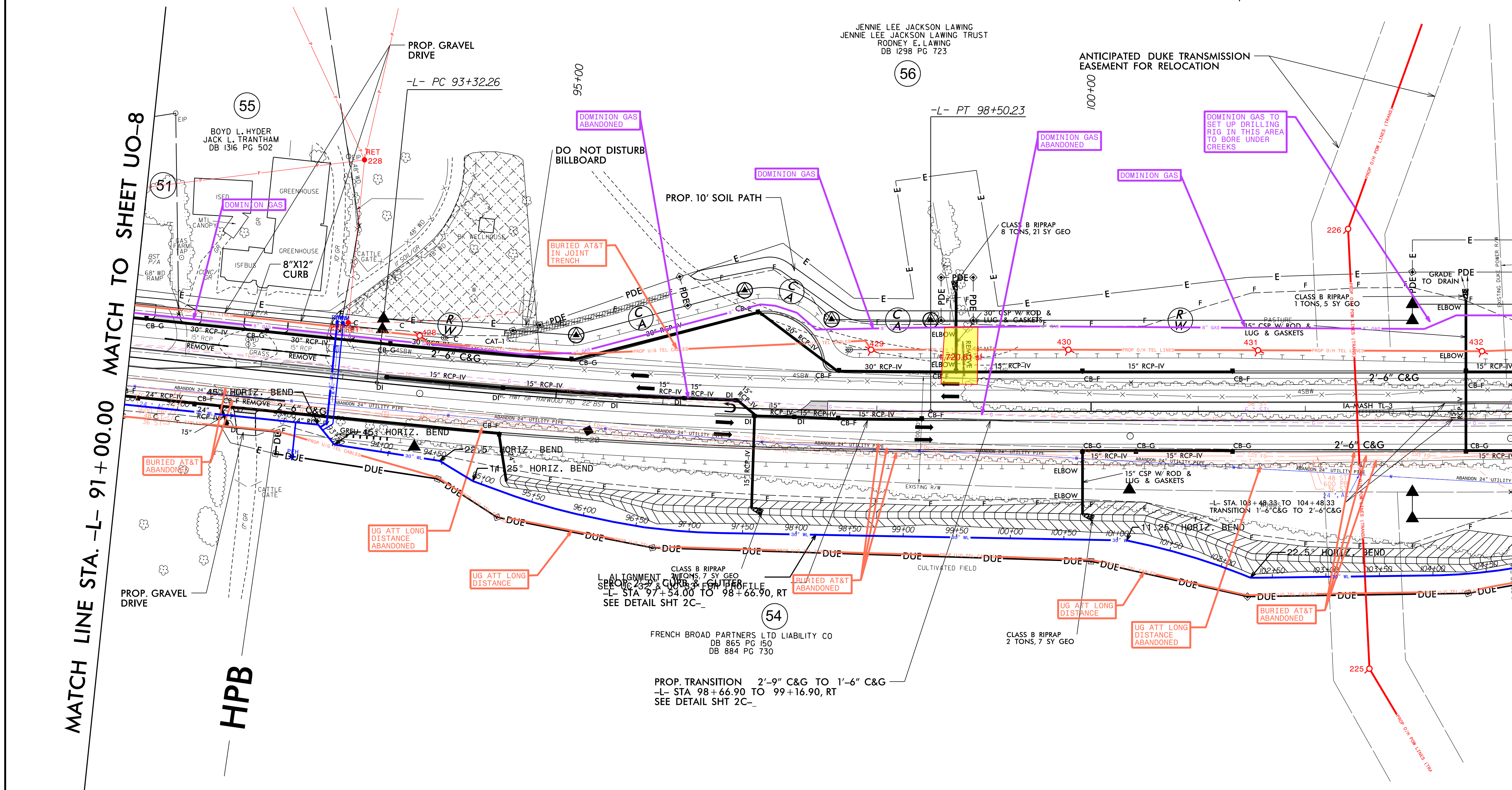
UTILITIES BY OTHERS

ALL PROPOSED UTILITY WORK SHOWN ON THIS SHEET WILL BE DONE BY OTHERS. NO PAYMENT WILL BE MADE TO THE CONTRACTOR FOR PROPOSED UTILITY WORK SHOWN ON THIS SHEET.



MATCH LINE STA. -L- 91+00.00 MATCH TO SHEET UO-8

MATCH LINE STA. -L- 104+00.00 MATCH TO SHEET UO-10



BOYD L. HYDER
JACK L. TRANTHAM
DB 1316 PG 502

JENNIE LEE JACKSON LAWING
JENNIE LEE JACKSON LAWING TRUST
RODNEY E. LAWING
DB 1298 PG 723

DO NOT DISTURB
BILLBOARD

FRENCH BROAD PARTNERS LTD LIABILITY CO
DB 865 PG 150
DB 884 PG 730

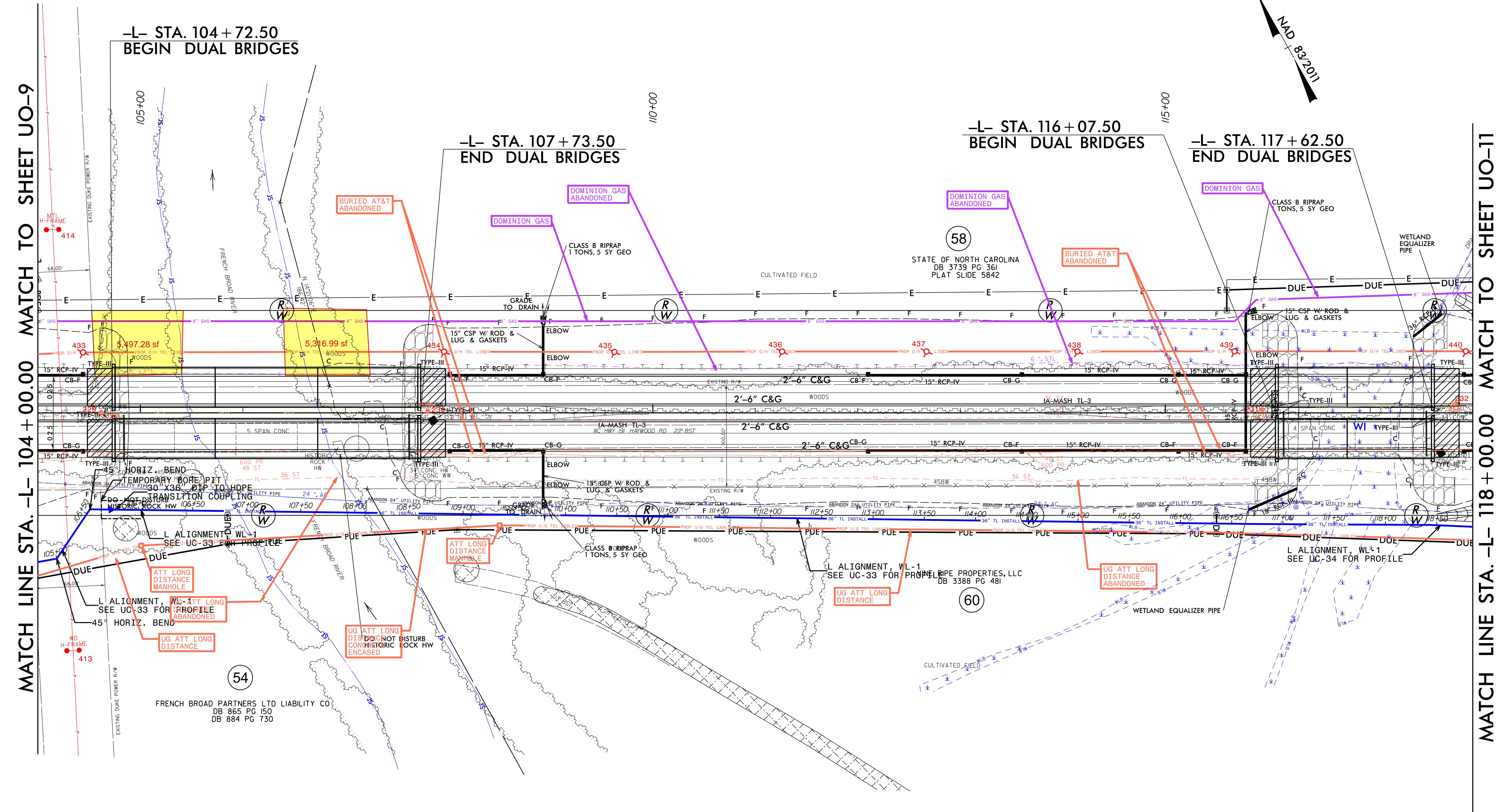
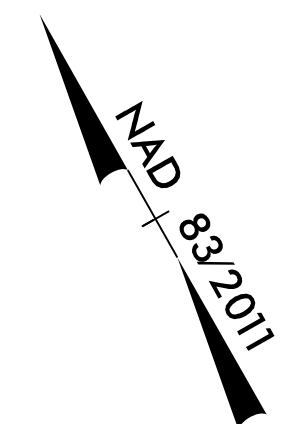
PROP. TRANSITION 2'-9" C&G TO 1'-6" C&G
-L- STA 98+66.90 TO 99+16.90, RT
SEE DETAIL SHT 2C-

18 DEC 2023 09:16
C:\Users\jld\OneDrive\Documents\Projects\RDY-11\UO-11\UO11_psh.dgn
R-2588B-ut-rdyl1_u011_psh.dgn

Total this sheet 10,814 SF

UTILITIES BY OTHERS

ALL PROPOSED UTILITY WORK SHOWN ON THIS SHEET WILL BE DONE BY OTHERS. NO PAYMENT WILL BE MADE TO THE CONTRACTOR FOR PROPOSED UTILITY WORK SHOWN ON THIS SHEET.



MATCH LINE STA. -L- 104 + 00.00 MATCH TO SHEET UO-9

MATCH LINE STA. -L- 118 + 00.00 MATCH TO SHEET UO-11

-L- STA. 104 + 72.50
BEGIN DUAL BRIDGES

-L- STA. 107 + 73.50
END DUAL BRIDGES

-L- STA. 116 + 07.50
BEGIN DUAL BRIDGES

-L- STA. 117 + 62.50
END DUAL BRIDGES

FRENCH BROAD PARTNERS LTD LIABILITY CO
DB 865 PG 150
DB 884 PG 730

STATE OF NORTH CAROLINA
DB 3739 PG 361
PLAT SLIDE 5842

PIPE PROPERTIES, LLC
DB 3388 PG 481

TEMPORARY BORE PIT
30" X 36" DTP TO HDPE
PIPE NOT DISTURB
HIS ONE ROCK HW 106+50

L ALIGNMENT, WL-1
SEE UC-33 FOR PROFILE

L ALIGNMENT, WL-1
SEE UC-33 FOR PROFILE

L ALIGNMENT, WL-1
SEE UC-34 FOR PROFILE

ATT LONG DISTANCE
MANHOLE

UG ATT LONG DISTANCE
DO NOT DISTURB
CON HISTORIC ROCK HW
ENGAGED

UG ATT LONG DISTANCE
ABANDONED

414

413

433

225

45

413

5,497.28 sf

5,316.99 sf

434

435

58

BURIED AT&T
ABANDONED

437

438

439

440

432

431

430

429

428

427

426

425

424

423

422

421

420

419

418

417

416

415

414

413

412

411

410

409

408

407

406

405

404

403

402

401

400

399

398

397

396

395

394

393

392

391

390

389

388

387

386

385

384

383

382

381

380

379

378

377

376

375

374

373

372

371

370

369

368

367

366

365

364

363

362

361

360

359

358

357

356

355

354

353

352

351

350

349

348

347

346

345

344

343

342

341

340

339

338

337

336

335

334

333

332

331

330

329

328

327

326

325

324

323

322

321

320

319

318

317

316

315

314

313

312

311

310

309

308

307

306

305

304

303

302

301

300

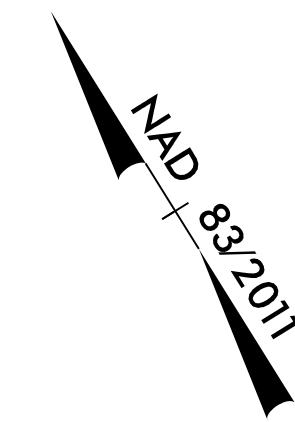
299

298

297

PROJECT REFERENCE NO.	SHEET NO.
R-2588B	U0-13
THIS SHEET CORRESPONDS TO R0Y-13	

Total this sheet 38,100 SF

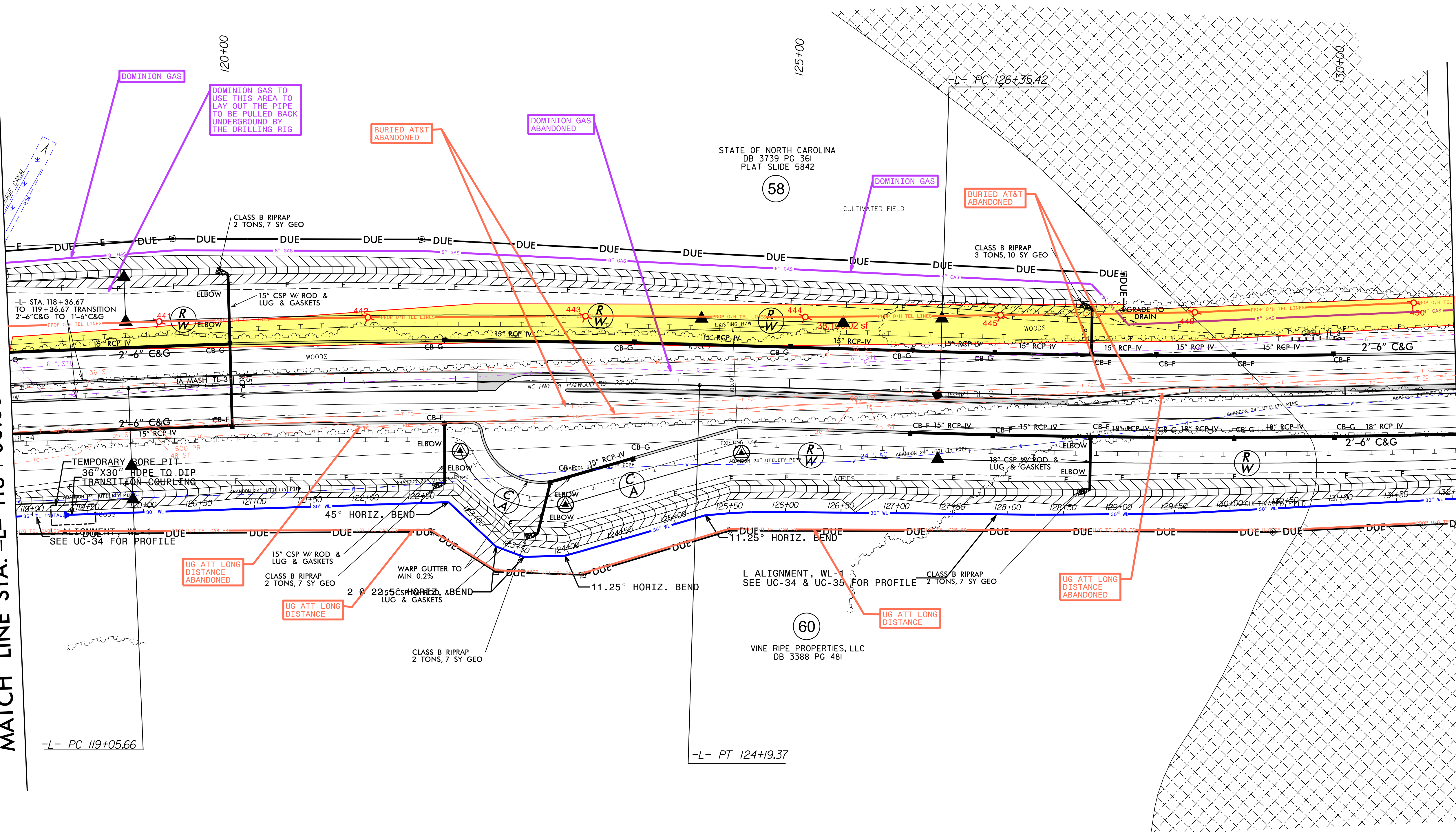


UTILITIES BY OTHERS

ALL PROPOSED UTILITY WORK SHOWN ON THIS SHEET WILL BE DONE BY OTHERS. NO PAYMENT WILL BE MADE TO THE CONTRACTOR FOR PROPOSED UTILITY WORK SHOWN ON THIS SHEET.

MATCH LINE STA. -L- 118+00.00 MATCH TO SHEET UO-10

MATCH LINE STA. -L- 131+00.00 MATCH TO SHEET UO-12



STATE OF NORTH CAROLINA
DB 3739 PG 361
PLAT SLIDE 5842

(58)

VINE RIPE PROPERTIES, LLC
DB 3388 PG 481

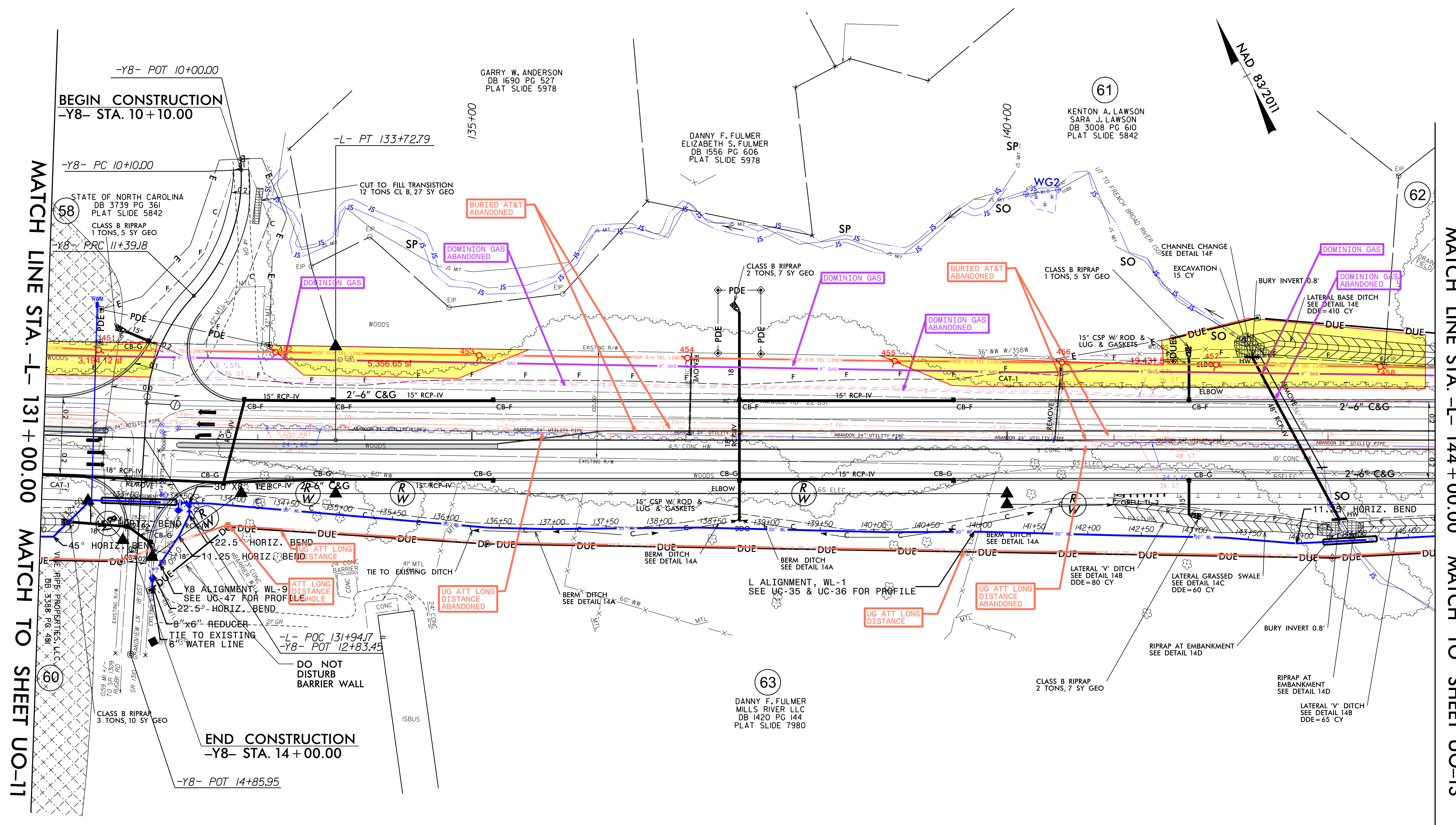
(60)

PROJECT REFERENCE NO.	SHEET NO.
R-2588B	UO-14
THIS SHEET CORRESPONDS TO RDY- 14	

Total this sheet 27,981 SF

UTILITIES BY OTHERS

ALL PROPOSED UTILITY WORK SHOWN ON THIS SHEET WILL BE DONE BY OTHERS. NO PAYMENT WILL BE MADE TO THE CONTRACTOR FOR PROPOSED UTILITY WORK SHOWN ON THIS SHEET.



MATCH LINE STA. -L- 131+00.00 MATCH TO SHEET UO-11

MATCH LINE STA. -L- 144+00.00 MATCH TO SHEET UO-13

BEGIN CONSTRUCTION
-Y8- STA. 10+10.00

END CONSTRUCTION
-Y8- STA. 14+00.00

5/14/99

B-DEC-2023 12:50
\\UBO\eng\UBO\Proj\290_027_R2588B.ut_r.dwg U014.psh.dgn

Total this sheet 47,505 SF

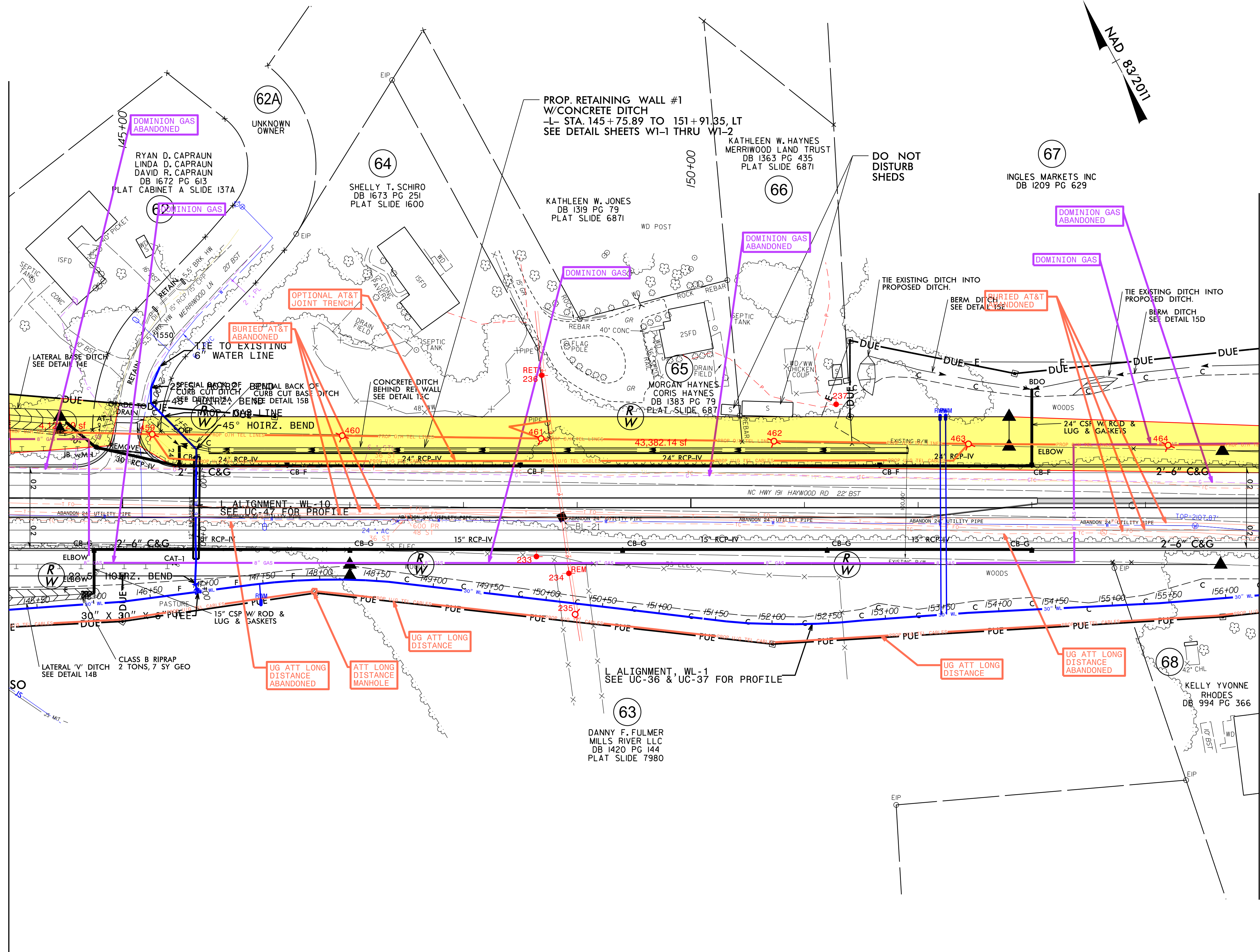
UTILITIES BY OTHERS

ALL PROPOSED UTILITY WORK SHOWN ON THIS SHEET WILL BE DONE BY OTHERS. NO PAYMENT WILL BE MADE TO THE CONTRACTOR FOR PROPOSED UTILITY WORK SHOWN ON THIS SHEET.

5/14/99

MATCH LINE STA. -L- 144 + 00.00 MATCH TO SHEET UO-12

MATCH LINE STA. -L- 155 + 00.00 MATCH TO SHEET UO-14



18 DEC 2023 13:04
 B:\UBDC\Utility\Engineering\UBDN\Proj\290_029_R2588B\ut_r.dwg\15_U015_psh.dgn
 \$\$\$\$\$\$

Total this sheet 12,414 SF

PROJECT REFERENCE NO.	SHEET NO.
R-2588B	U0-16
THIS SHEET CORRESPONDS TO RDY- 16	

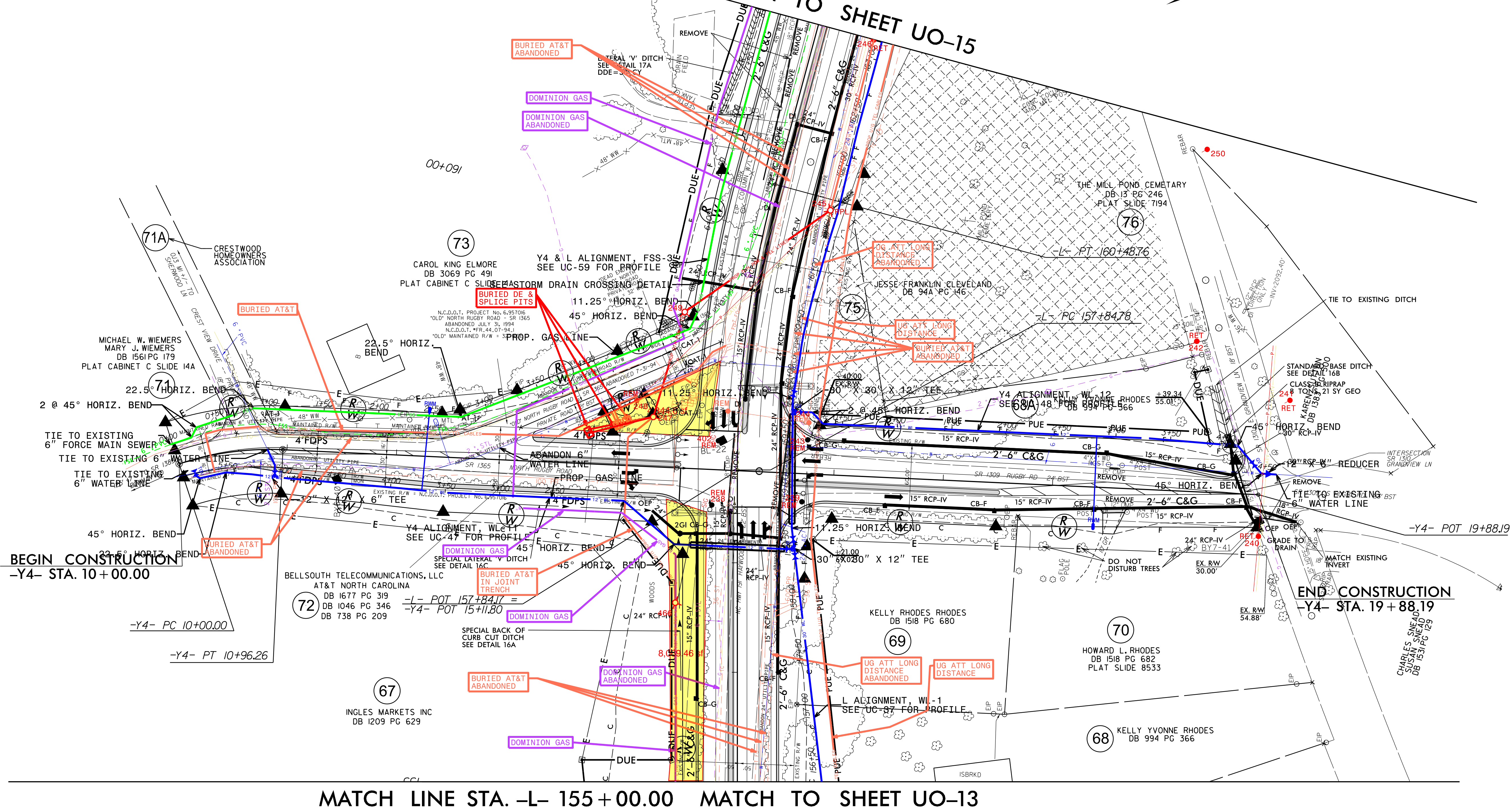
UTILITIES BY OTHERS

ALL PROPOSED UTILITY WORK SHOWN ON THIS SHEET WILL BE DONE BY OTHERS. NO PAYMENT WILL BE MADE TO THE CONTRACTOR FOR PROPOSED UTILITY WORK SHOWN ON THIS SHEET.

5/14/1999



MATCH LINE STA. -L- 162+00.00 MATCH TO SHEET UO-15



BEGIN CONSTRUCTION -Y4- STA. 10+00.00

END CONSTRUCTION -Y4- STA. 19+88.19

MATCH LINE STA. -L- 155+00.00 MATCH TO SHEET UO-13

18-DEC-2023 13:09 \\N\UBO\Proj\18-290_0311_P2588B.ut_rdy16.U016.psh.dgn

Total this sheet 4,270 SF

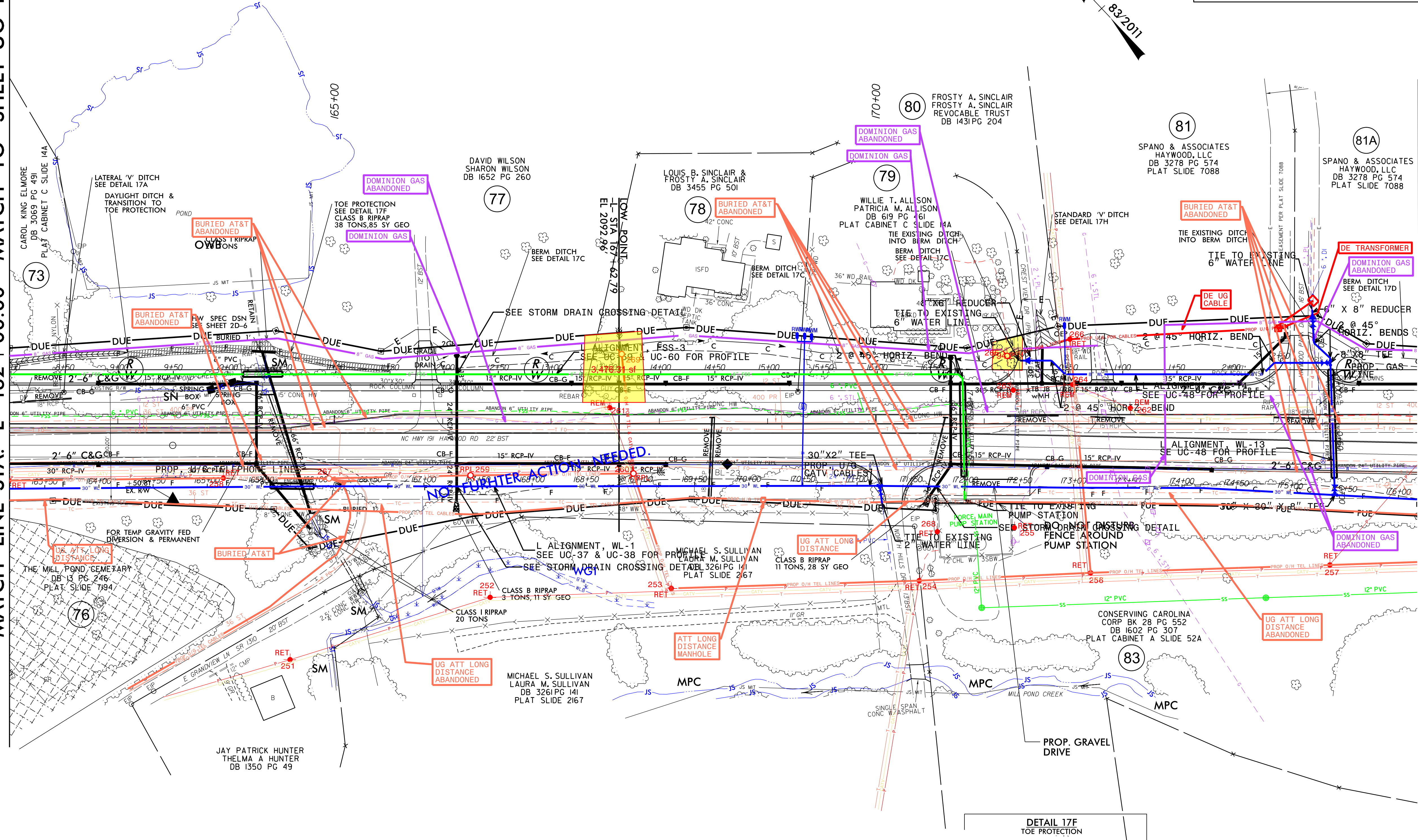
UTILITIES BY OTHERS

ALL PROPOSED UTILITY WORK SHOWN ON THIS SHEET WILL BE DONE BY OTHERS. NO PAYMENT WILL BE MADE TO THE CONTRACTOR FOR PROPOSED UTILITY WORK SHOWN ON THIS SHEET.



MATCH LINE STA. -L- 162 + 00.00 MATCH TO SHEET UO-14

MATCH LINE STA. -L- 175 + 00.00 MATCH TO SHEET UO-16



MATCH LINE STA. -L- 162 + 00.00 MATCH TO SHEET UO-14

MATCH LINE STA. -L- 175 + 00.00 MATCH TO SHEET UO-16

HAYWOOD KNOLLS ASSOC., INC.
DB 790 PG 801
PLACE CABINET A SLIDE 52A

DETAIL 17F
TOE PROTECTION

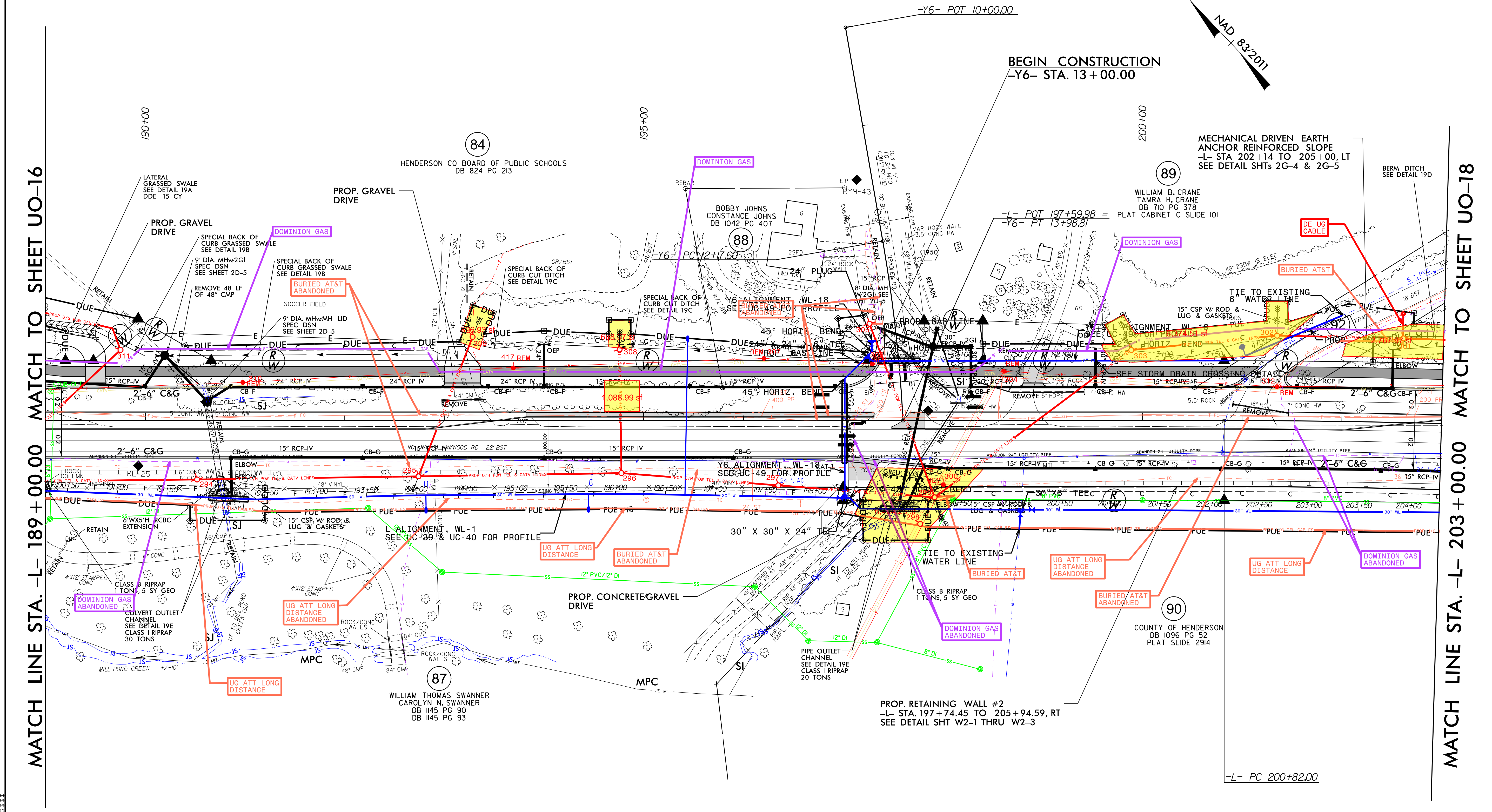
18-DEC-2023 13:14 \\UB05\Users\Engineering\UB05\Projects\290_033_R2588B\ut_rdy17_uo17_psh.dgn

Total this sheet 18,159 SF

PROJECT REFERENCE NO.	SHEET NO.
R-2588B	U0-19
THIS SHEET CORRESPONDS TO RDY- 19	

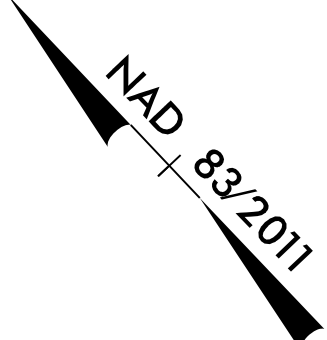
UTILITIES BY OTHERS

ALL PROPOSED UTILITY WORK SHOWN ON THIS SHEET WILL BE DONE BY OTHERS. NO PAYMENT WILL BE MADE TO THE CONTRACTOR FOR PROPOSED UTILITY WORK SHOWN ON THIS SHEET.



MATCH LINE STA. -L- 189 + 00.00 MATCH TO SHEET UO-16

MATCH LINE STA. -L- 203 + 00.00 MATCH TO SHEET UO-18



BEGIN CONSTRUCTION
-Y6- STA. 13+00.00

MECHANICAL DRIVEN EARTH ANCHOR REINFORCED SLOPE
-L- STA 202+14 TO 205+00, LT
SEE DETAIL SHTS 2G-4 & 2G-5

PROP. RETAINING WALL #2
-L- STA. 197+74.45 TO 205+94.59, RT
SEE DETAIL SHT W2-1 THRU W2-3

-L- PC 200+82.00

5/14/99
 18-DEC-2023 13:46
 3:\UB04\18-DEC-2023 13:46\Engineering\UB04\Proj\2588B\ut_rdy\19_u019_psh.dgn

UTILITIES BY OTHERS

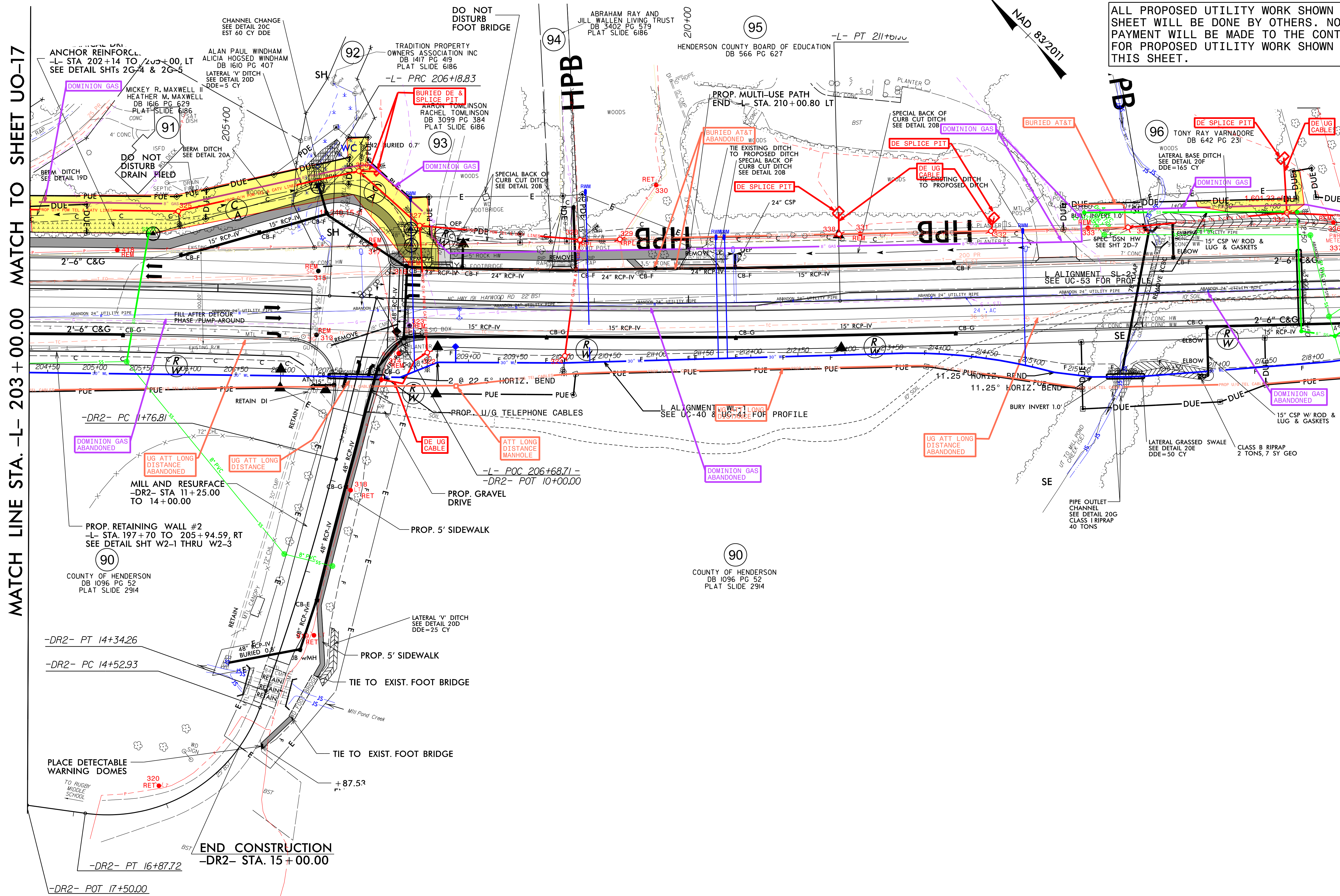
ALL PROPOSED UTILITY WORK SHOWN ON THIS SHEET WILL BE DONE BY OTHERS. NO PAYMENT WILL BE MADE TO THE CONTRACTOR FOR PROPOSED UTILITY WORK SHOWN ON THIS SHEET.

5/14/99

B:\DEC-2023\15154\Bearing\UB01\PC-01\20_039_R2588B.ut.rdy20_U020_psh.dgn

MATCH LINE STA. -L- 203 + 00.00 MATCH TO SHEET UO-17

MATCH LINE STA. -L- 217 + 00.00 MATCH TO SHEET UO-19



END CONSTRUCTION
-DR2- STA. 15 + 00.00

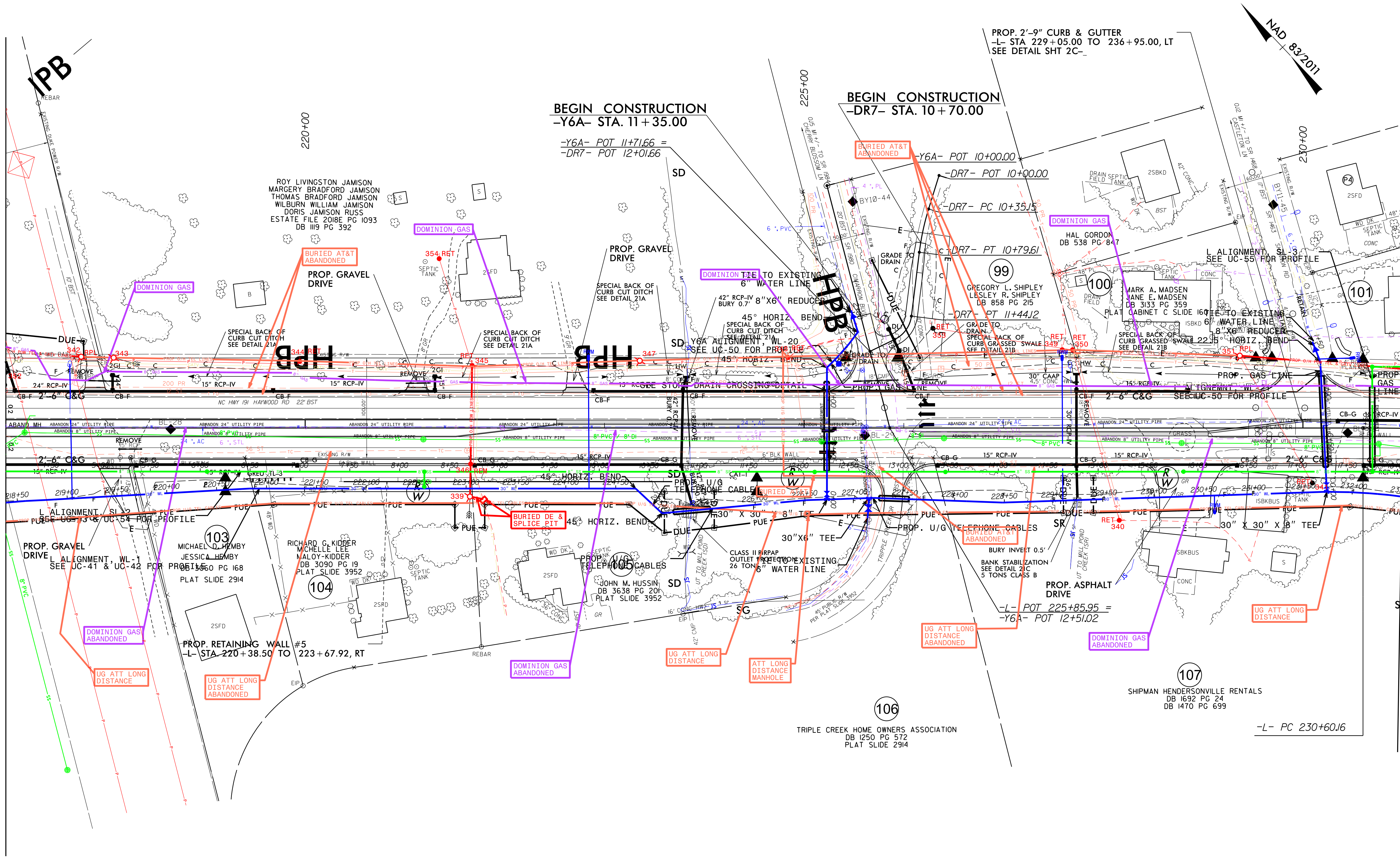
Total this sheet 0 SF

UTILITIES BY OTHERS

ALL PROPOSED UTILITY WORK SHOWN ON THIS SHEET WILL BE DONE BY OTHERS. NO PAYMENT WILL BE MADE TO THE CONTRACTOR FOR PROPOSED UTILITY WORK SHOWN ON THIS SHEET.

MATCH LINE STA. -L- 217 + 00.00 MATCH TO SHEET UO-18

MATCH LINE STA. -L- 231 + 00.00 MATCH TO SHEET UO-20



5/14/2023

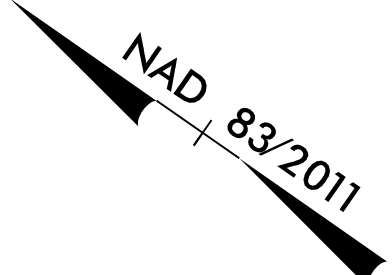
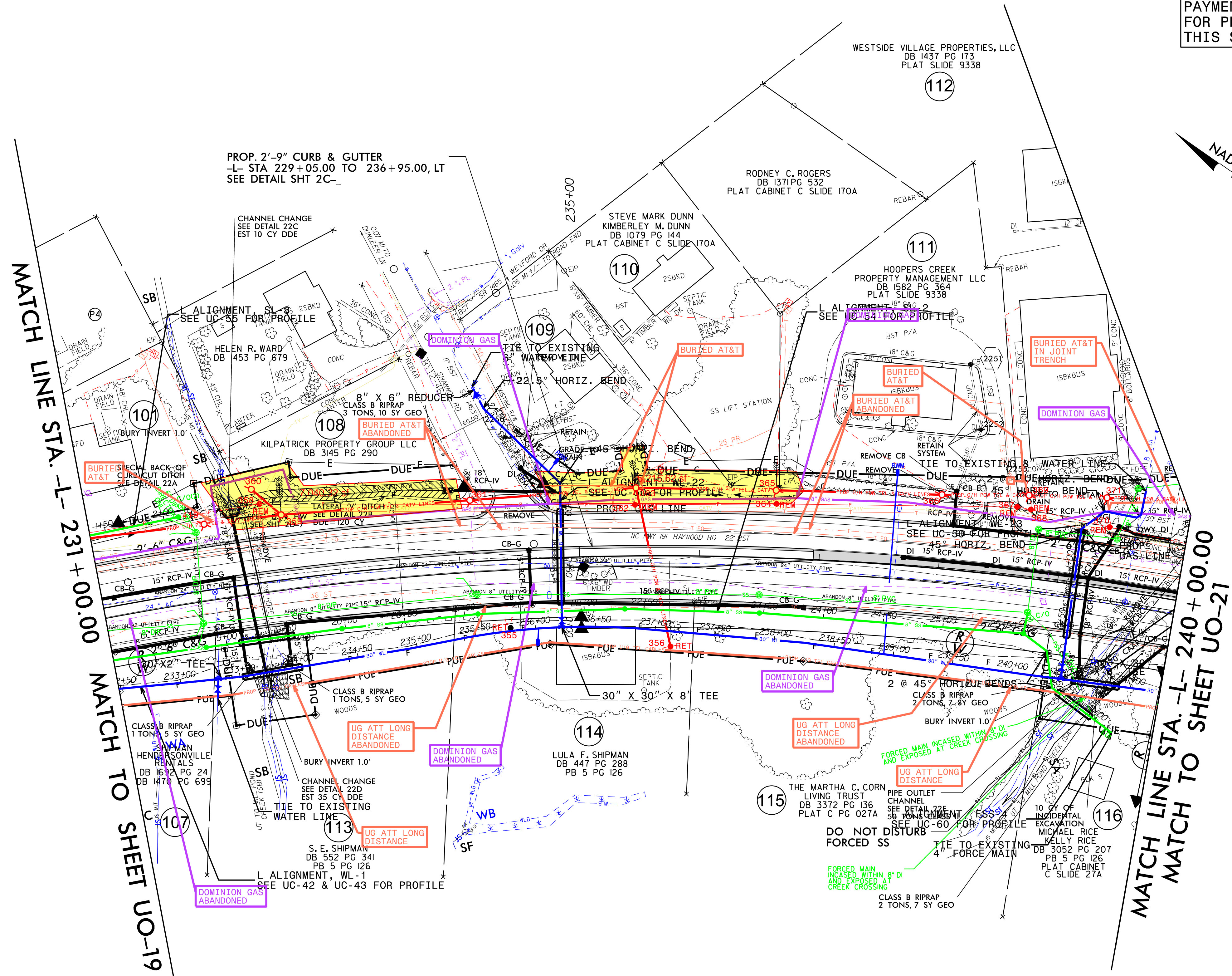
18-DEC-2023 13:59
 \\01\projects\2588B\RDY\2588B.dwg
 2588B.dwg

PROJECT REFERENCE NO.	SHEET NO.
R-2588B	U0-22
THIS SHEET CORRESPONDS TO RDY- 22	

Total this sheet 13,255 SF

UTILITIES BY OTHERS

ALL PROPOSED UTILITY WORK SHOWN ON THIS SHEET WILL BE DONE BY OTHERS. NO PAYMENT WILL BE MADE TO THE CONTRACTOR FOR PROPOSED UTILITY WORK SHOWN ON THIS SHEET.



MATCH LINE STA. -L- 231+00.00 MATCH TO SHEET UO-19

MATCH LINE STA. -L- 240+00.00 MATCH TO SHEET UO-21

5/14/99

18-DEC-2023 4:05 PM \\UBD\Engineering\UBD\Proj\290_043_R2588B-ut-rdy\22_U022_psh.dgn

